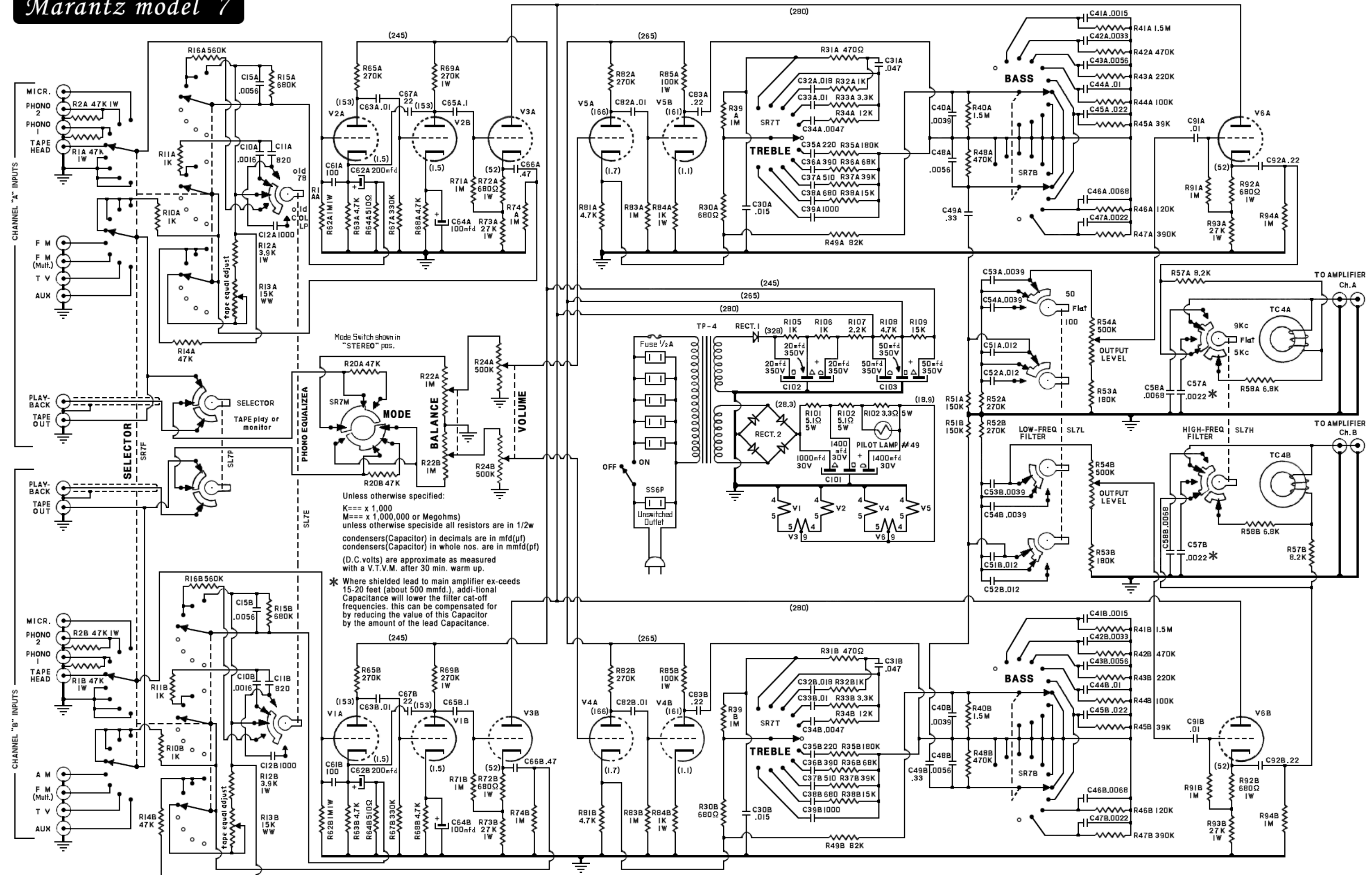


Marantz model 7



Mode Switch shown in "STEREO" pos.

Unless otherwise specified:
 K = x 1,000
 M = x 1,000,000 or Megohms
 unless otherwise specified all resistors are in 1/2w
 condensers (Capacitor) in decimals are in mfd (μf)
 condensers (Capacitor) in whole nos. are in mmfd (pf)
 (D.C. volts) are approximate as measured
 with a V.T.V.M. after 30 min. warm up.

* Where shielded lead to main amplifier ex-ceeds
 15-20 feet (about 500 mmfd.), additional
 Capacitance will lower the filter cut-off
 frequencies. this can be compensated for
 by reducing the value of this Capacitor
 by the amount of the lead Capacitance.

